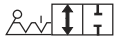


Universal and Universal Customised Series

0402 2/2 In-Line Ball Valve, Female BSPP Thread



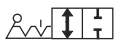
	Nickel-plated brass, NBR		C	E	F	F1	H	H1	L	L1	M	kg
			G1/8 4 0402 04 10	8	-	14	35	29	44	25	48	0.094
			G1/8 7 0402 07 10	8	19	19	38	31	51	27	48	0.166
			G1/4 7 0402 07 13	12	19	19	38	31	53	28	48	0.156
			G3/8 10 0402 10 17	12	24	24	45	43	59	31	69	0.244
			G1/2 13 0402 13 21	15	27	27	47	44	67	34	69	0.292
			G3/4 20 0402 20 27	16.5	32	38	63	54	80	39	108	0.655
			G1 23 0402 23 34	19	41	46	67	57	94	47	108	1.036
			G1¼ 32 0402 32 42*	21.5	55	60	97	115	112	59	180	2.467
			G1½ 32 0402 32 49*	22	55	60	97	115	120	62	180	2.340
			G1½ 40 0402 40 49*	22	55	55	104	-	111	55	190	2.445
			G2 40 0402 40 48*	26	70	70	104	-	122	61	190	2.614
*Models with CE marking Maximum working pressure: 40 bar												

0401 2/2 In-Line Ball Valve, Male/Female BSPP Thread



	Nickel-plated brass, NBR		C	E	E1	F	H	H1	J	L	L1	M	kg
			G1/8 4 0401 04 10	8	7	14	35	29	14	45	25	48	0.094
			G1/8 5 0401 05 10	8	7	19	38	31	19	51	27	48	0.160
			G1/4 7 0401 07 13	12	9	19	38	31	19	52	28	48	0.150
			G3/8 10 0401 10 17	12	11	24	45	43	24	58	31	69	0.234
			G1/2 13 0401 13 21	15	12	27	47	44	27	66	34	69	0.286
			G3/4 18 0401 18 27	16.5	12	38	63	54	39	79	39	108	0.652
			G1 23 0401 23 34	19	15	46	67	57	48	91	47	108	0.952
			G1¼ 32 0401 32 42*	21.5	18	60	97	115	55	113	59	108	2.385
*Models with CE marking Maximum working pressure: 40 bar													

0400 2/2 In-Line Ball Valve, Male BSPP Thread



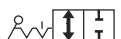
	Nickel-plated brass, NBR		C	E	F	H	H1	J	L	L1	M	kg
			G1/8 4 0400 04 10	7	14	35	29	14	45	25	48	0.094
			G1/4 7 0400 07 13	9	19	38	31	19	60	36	48	0.166
			G3/8 10 0400 10 17	11	24	45	43	24	70	43	69	0.252
			G1/2 13 0400 13 21	12	27	47	44	27	78	45	69	0.324
			G3/4 18 0400 18 27	12	38	63	54	39	90	50	108	0.714
Maximum working pressure: 40 bar												

0411 2/2 In-Line Ball Valve with Connections for Use with Steel Tube



	Nickel-plated brass, NBR		ØD	F	F1	H	H1	J	L	L1	M	kg
			6 4 0411 04 06	14	19	38	31	19	76	30	48	0.073
			8 6 0411 06 08	17	19	38	31	19	77	30	48	0.095
			10 7 0411 07 10	19	19	38	31	19	78	31	48	0.100
			12 10 0411 10 12	22	24	45	43	24	85	36	69	0.110
Maximum working pressure: 40 bar												

0414 2/2 In-Line Ball Valve with Compression Connections



	Nickel-plated brass, NBR		ØD	F	F1	H	H1	J	L	L1	M	kg
			6 4 0414 04 06	13	19	38	31	19	72	31	48	0.177
			8 6 0414 06 08	14	19	38	31	19	74	30	48	0.180
			10 7 0414 07 10	19	19	38	31	19	78	31	48	0.210
			12 10 0414 10 12	22	24	45	43	24	86	36	69	0.308
Maximum working pressure: 40 bar												