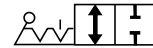
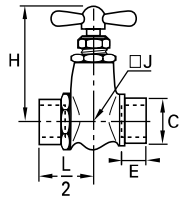


Nadelventile aus Messing

0502 Nadelventil, Innengewinde BSPP

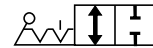


Messing vernickelt

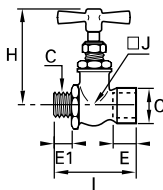


DN	C		E	H	H _{max}	J	L/2	Kg
4	G1/8	0502 04 10	9	56	50	17	23	0,133
	G1/4	0502 04 13	11	56	50	17	23	0,118
6	G3/8	0502 06 17	12	67	60	-	26	0,171
9	G3/8	0502 09 17	12	82	70	-	33	0,426

0501 Nadelventil, Außen-/Innengewinde BSPP

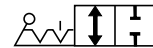


Messing vernickelt

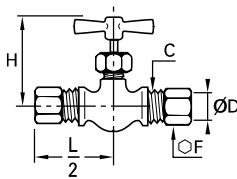


DN	C		E	E1	H	H _{max}	J	L	Kg
4	G1/8	0501 04 10	9	7	56	50	17	44	0,118
	G1/4	0501 04 13	11	9,5	56	50	17	46	0,115
6	G3/8	0501 06 17	12	9,5	67	60	-	48	0,158

0510 Nadelventil mit Klemmverschraubungen



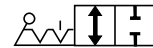
Messing vernickelt



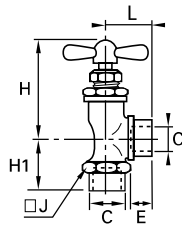
DN	ØD	C		F	H _{min}	H _{max}	L/2	Kg
4	6	M10x1	0510 04 06	13	42	46	29	0,083
8	8	M12x1	0510 05 08	14	42	46	30	0,083
5	10	M16x1,5	0510 05 10	19	42	46	31	0,111

Ausführung mit O-Ring-Abdichtung.
 Maximaler Betriebsdruck: Ø4 mm: 100 bar, Ø5 mm: 60 bar
 Temperaturbereich: -15° bis +70°C
 Anzugsdrehmoment: siehe Kapitel Klemmverschraubungen

0532 Nadelventil, Winkelausführung, Innengewinde BSPP

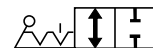


Messing vernickelt

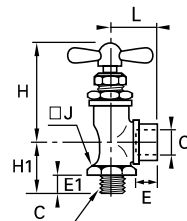


DN	C		E	H _{min}	H _{max}	H1	J	L	Kg
4	G1/8	0532 04 10	9	46	52	19	17	19	0,093
	G1/4	0532 04 13	11	46	52	21	17	21	0,087
6	G1/4	0532 06 13	11	55	63	26	22	26	0,171

0531 Nadelventil, Winkelausführung, Außen-/Innengewinde BSPP



Messing vernickelt



DN	C		E	E1	H _{min}	H _{max}	H1	J	L	Kg
4	G1/8	0531 04 10	7	9	46	52	19	17	19	0,082
	G1/4	0531 04 13	9,5	11	46	52	21	17	21	0,090
6	G1/4	0531 06 13	9,5	11	55	63	25	22	26	0,155
	G3/8	0531 06 17	9,5	12	55	63	25	22	27	0,153
10	G1/2	0531 10 21	13	16	62	72	34	26	33	0,329